

montrose 30

4 3 2 2

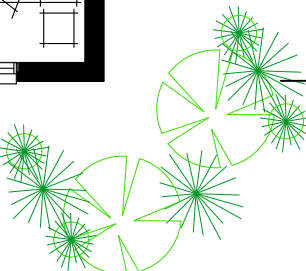
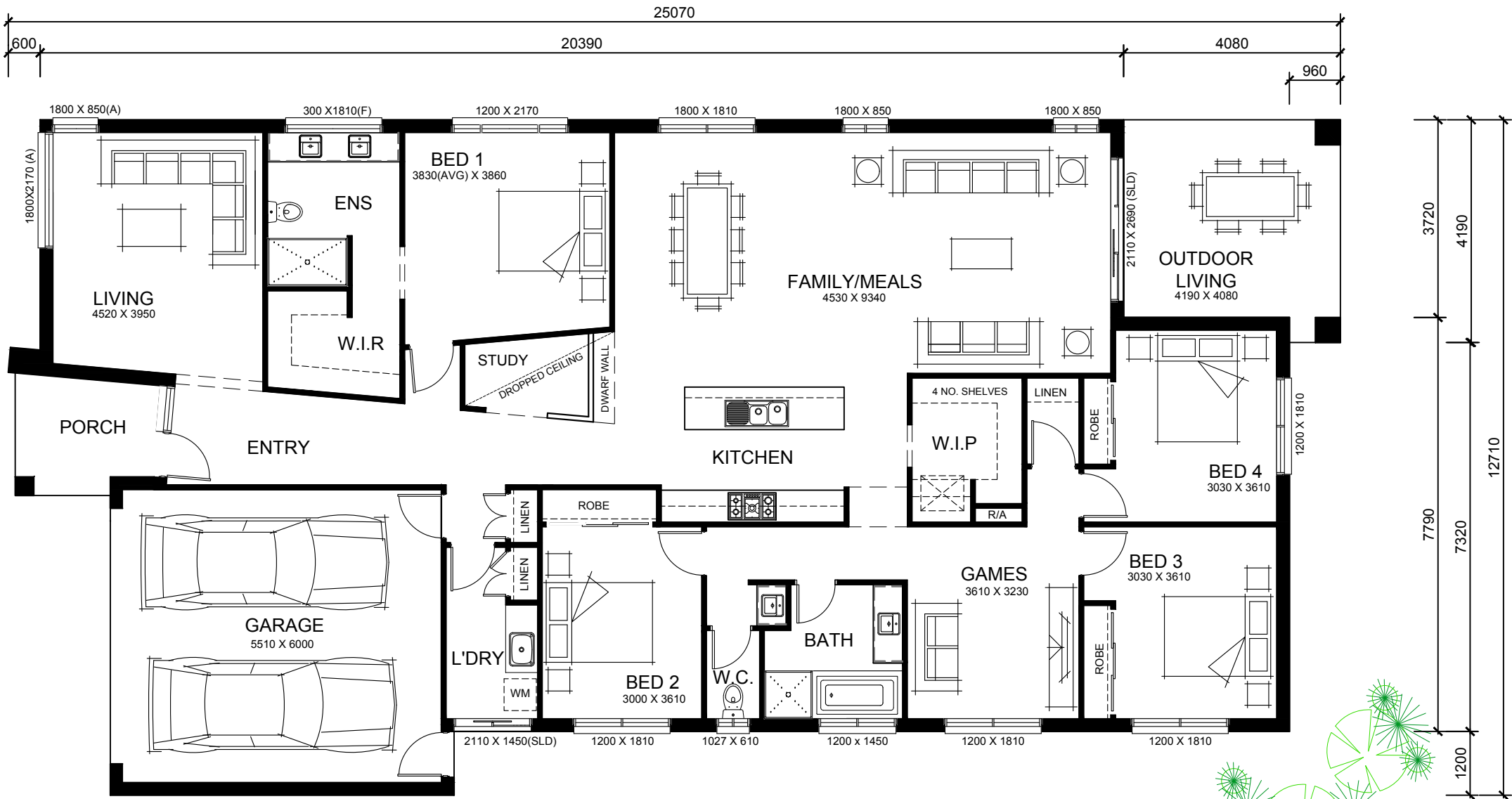
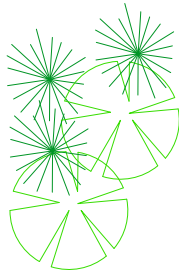
land

min lot width 13.91 m  
min lot lengthΔ 33.33m

house

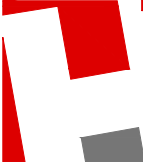
width 12.71 m  
length 25.07 m

14.0M\*



FLOOR AREAS		
GROUND FLOOR:	220.35 sq.m	23.72 sqrs
GARAGE:	36.30 sq.m	3.91 sqrs
PORCH:	5.57 sq.m	0.60 sqrs
OUTDOOR LIVING	15.62 sq.m	1.68 sqrs
TOTAL:	277.84 sq.m	29.91 sqrs

\* Subject to fall on land, orientation, developers and council guidelines. Δ 4m front setback subject to guidelines & setback to rear to achieve max. 60% site coverage. (Issue 3)



This information is subject to the Copyright Act 198 (Cth) and is the property of Hallbury Homes (ACN155 388 604). All rights are reserved. Unless otherwise stated no information may be used or reproduced in any way including but not limited to adopted, hard printed, published, distributed, communicated, performed, copied or transmitted in any form without permission.

standard single storey

Hallburyhomes  
Love Coming Home

1/385 McClelland Drive Langwarrin Vic 3910  
P: 9770-8882 F: 9770-8883 E: sales@hallburyhomes.com.au