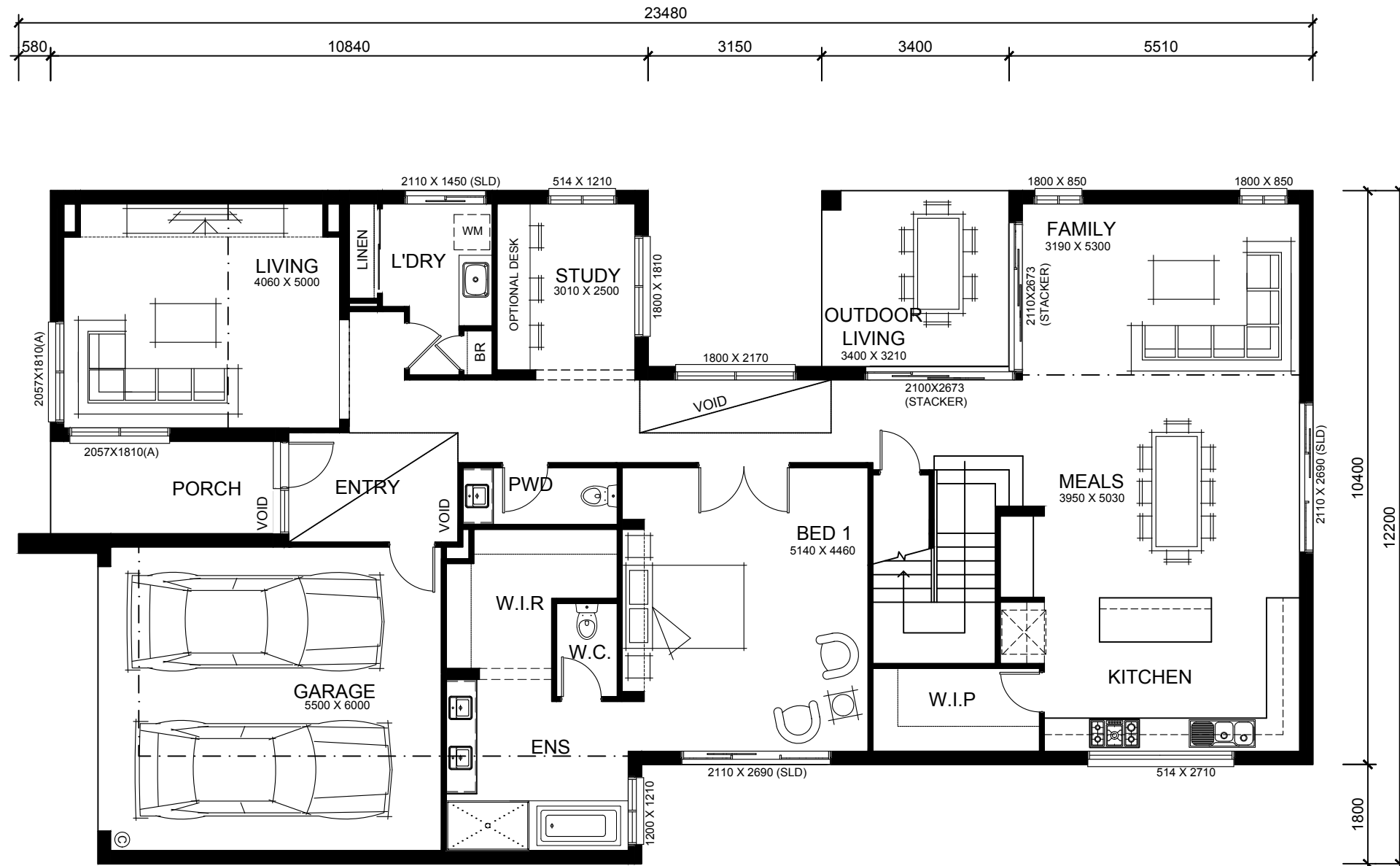


Pavillion⁴³



GROUND FLOOR PLAN

1300 HALLBURY HALLBURYHOMES.COM.AU



12.20m
OVERALL WIDTH

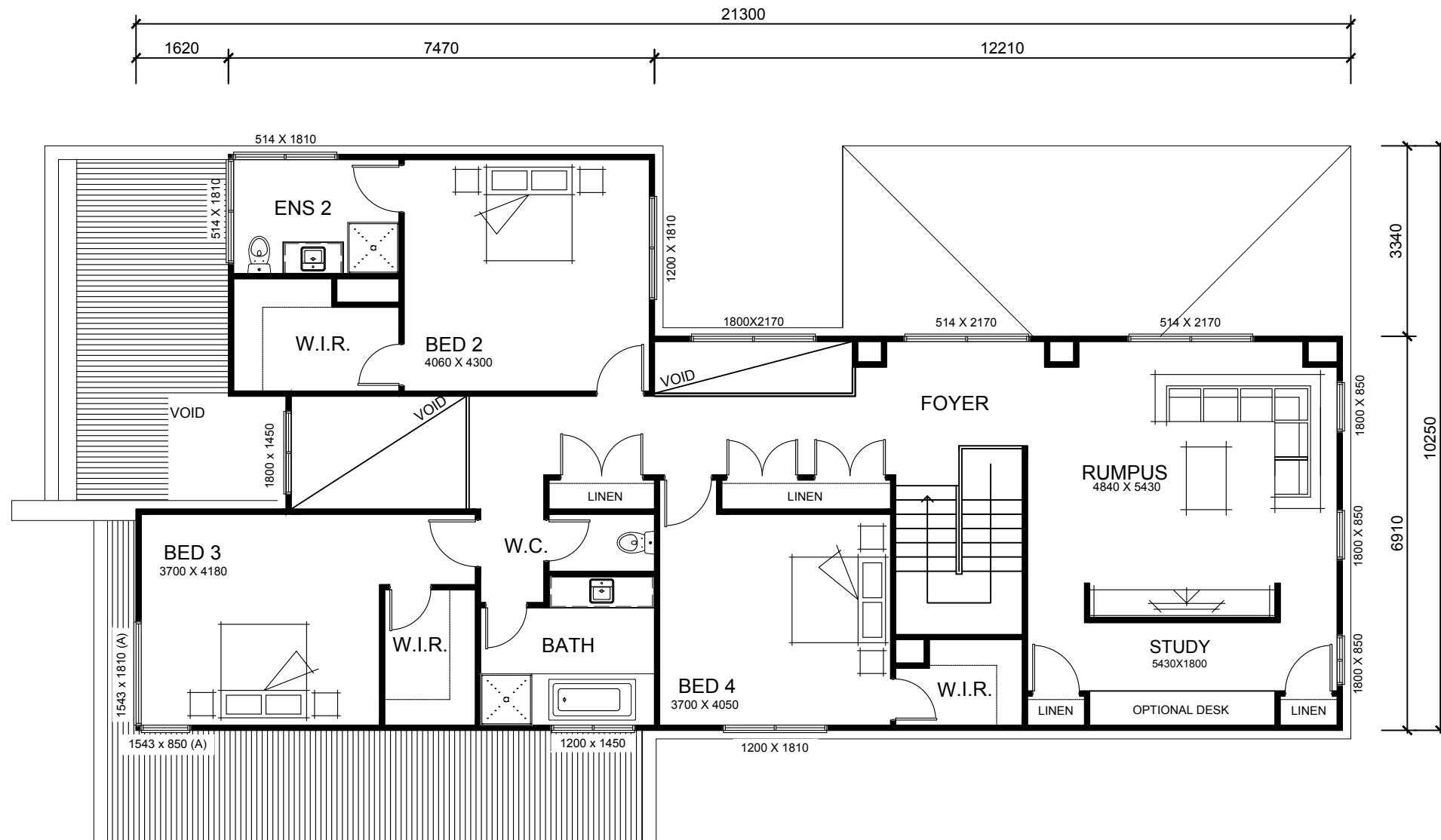
23.48m
OVERALL LENGTH

14.00m
MIN LOT WIDTH[^]

28.70m
MIN LOT LENGTH[^]

Ground Floor	190.19 sqm	20.47 sq
First Floor	163.34 sqm	17.58 sq
Garage	35.87 sqm	3.86 sq
Porch	6.98 sqm	0.75 sq
Outdoor Living	10.86 sqm	1.16 sq
Total	407.24 sqm	43.82 sq

^Subject to fall on land, orientation, developers and council guidelines. Δ 4m front setback subject to guidelines & setback to rear to achieve max. 60% site coverage. *Copyright conditions. All photos and illustrations are representative only. Floor plans and specifications may be varied by Hallbury Homes without notice, the dimensions are diagrammatic only and a Building Contract with final drawings will display correct dimensions and detail. All designs are the property of Hallbury Homes and must not be used, reproduced, copied or varied, wholly or in part without written permission from an authorised Hallbury Homes representative. Copyright Hallbuild Pty Ltd. ABN 96 155 388 604. Builders Registration Number CDB-U 48690.



FIRST FLOOR PLAN



12.20m
OVERALL WIDTH

23.48m
OVERALL LENGTH

14.00m
MIN LOT WIDTH[^]

28.70m
MIN LOT LENGTH[^]

Ground Floor	190.19 sqm	20.47 sq
First Floor	163.34 sqm	17.58 sq
Garage	35.87 sqm	3.86 sq
Porch	6.98 sqm	0.75 sq
Outdoor Living	10.86 sqm	1.16 sq
Total	407.24 sqm	43.82 sq

^Subject to fall on land, orientation, developers and council guidelines. Δ 4m front setback subject to guidelines & setback to rear to achieve max. 60% site coverage. *Copyright conditions. All photos and illustrations are representative only. Floor plans and specifications may be varied by Hallbury Homes without notice, the dimensions are diagrammatic only and a Building Contract with final drawings will display correct dimensions and detail. All designs are the property of Hallbury Homes and must not be used, reproduced, copied or varied, wholly or in part without written permission from an authorised Hallbury Homes representative. Copyright Hallbuild Pty Ltd. ABN 96 155 388 604. Builders Registration Number CDB-U 48690.