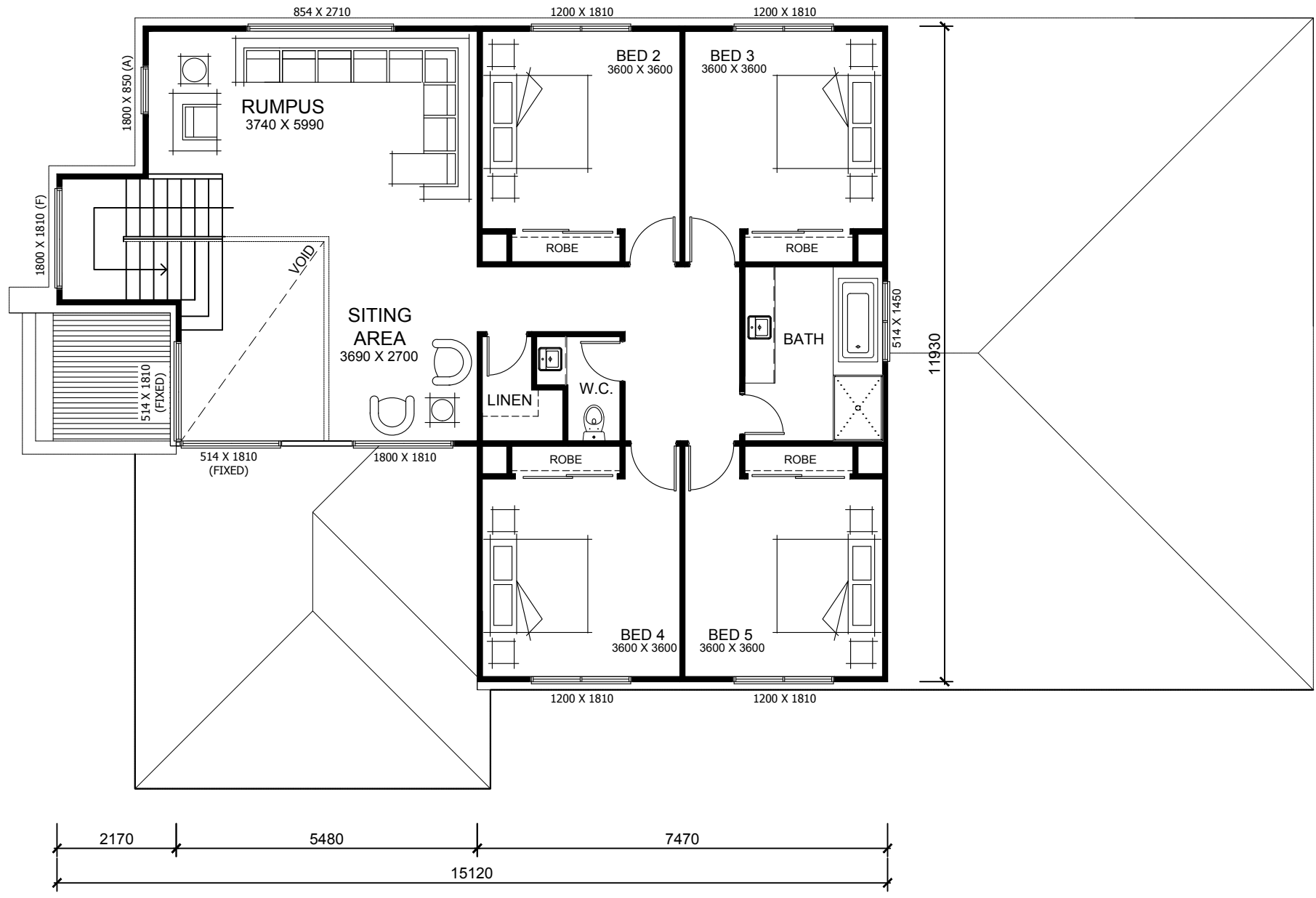


Manhattan⁴⁵



FIRST FLOOR PLAN



14.03m
OVERALL WIDTH
23.55m
OVERALL LENGTH

15.80m
MIN LOT WIDTH[^]
29.95m
MIN LOT LENGTH[^]

Ground Floor	222.46 sqm	23.94 sq
First Floor	138.19 sqm	14.87 sq
Garage	39.34 sqm	4.23 sq
Porch	6.74 sqm	0.72 sq
Outdoor Living	15.97 sqm	1.71 sq
Total	422.70 sqm	45.47 sq

1300 HALLBURY HALLBURYHOMES.COM.AU

^Subject to fall on land, orientation, developers and council guidelines. Δ 4m front setback subject to guidelines & setback to rear to achieve max. 60% site coverage. *Copyright conditions. All photos and illustrations are representative only. Floor plans and specifications may be varied by Hallbury Homes without notice, the dimensions are diagrammatic only and a Building Contract with final drawings will display correct dimensions and detail. All designs are the property of Hallbury Homes and must not be used, reproduced, copied or varied, wholly or in part without written permission from an authorised Hallbury Homes representative. Copyright Hallbuild Pty Ltd. ABN 96 155 388 604. Builders Registration Number CDB-U 48690.



GROUND FLOOR PLAN



14.03m
OVERALL WIDTH

15.80m
MIN LOT WIDTH^Δ

23.55m
OVERALL LENGTH

29.95m
MIN LOT LENGTH^Δ

Ground Floor	222.46 sqm	23.94 sq
First Floor	138.19 sqm	14.87 sq
Garage	39.34 sqm	4.23 sq
Porch	6.74 sqm	0.72 sq
Outdoor Living	15.97 sqm	1.71 sq
Total	422.70 sqm	45.47 sq

^Subject to fall on land, orientation, developers and council guidelines. Δ 4m front setback subject to guidelines & setback to rear to achieve max. 60% site coverage. *Copyright conditions. All photos and illustrations are representative only. Floor plans and specifications may be varied by Hallbury Homes without notice, the dimensions are diagrammatic only and a Building Contract with final drawings will display correct dimensions and detail. All designs are the property of Hallbury Homes and must not be used, reproduced, copied or varied, wholly or in part without written permission from an authorised Hallbury Homes representative. Copyright Hallbuild Pty Ltd. ABN 96 155 388 604. Builders Registration Number CDB-U 48690.